



SH2301

JRL ONYX SF PRO SHAVER

PATENTS:

2023 3073 8453.4

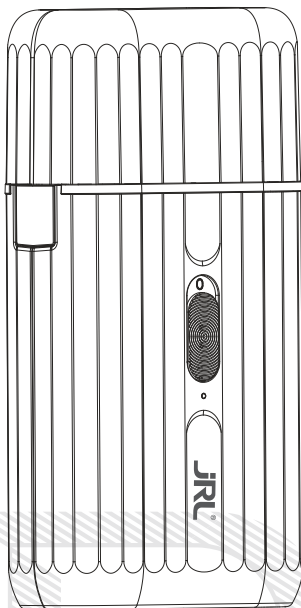
PCT/CN2022/126424

2023 1127 1230.7

2022 1118 9458.7

2023 2228 8403.8

2023 2311 4921.4



USER'S MANUAL

Tips

1. This product is not designed to be used on synthetic hair or for any other purpose other than cutting 100% human hair. The company will not take responsibility for malfunctions or damages caused by misuse.
2. This product is designed for professional and home use.

READ ALL INSTRUCTIONS BEFORE USING

KEEP AWAY FROM WATER

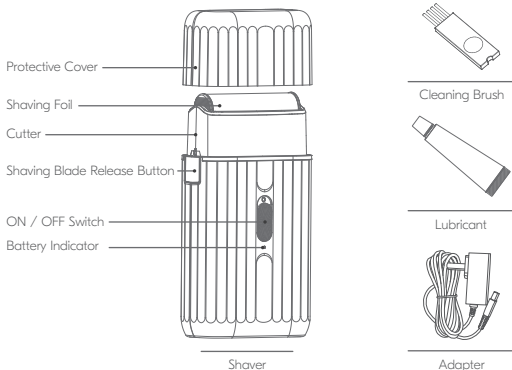
DANGER:

1. Unplug the power adapter before cleaning this shaver.
2. Remove the blade first, then use cleaning brush to remove any hair buildup.
3. Keep away from water in order to avoid shock or damage to the shaver.
4. If the shaver is accidentally dropped into water or any other chemicals, discard immediately. Do not try to dry it and plug it into a power source.

WARNING:

1. This appliance is not intended for use by persons (including children) with reduced physical, sensory or mental capabilities, or lack of experience and knowledge, unless they have been given supervision or instruction concerning use of the appliance by a person responsible for their safety.
2. Children should be supervised to ensure that they do not play with the appliance.
3. This appliance can be used by children aged from 8 years and above and persons with reduced physical, sensory or mental capabilities or lack of experience and knowledge if they have been given supervision or instruction concerning use of the appliance in a safe way and understand the hazards involved.
4. Children shall not play with the appliance.
5. Cleaning and user maintenance shall not be made by children without supervision.
6. The appliance is only to be used with the power supply unit provided with the appliance.
WARNING: Keep the appliance dry.
7. This appliance contains batteries that are non-replaceable.
8. To properly store, unplug adapter, and thoroughly clean your unit. Do not leave it attached to the adapter.
9. Keep the shaver away from hot surfaces.
10. Extended use in temperatures below -10°C or above 40°C is not recommended as it may damage the battery.
11. Do not use this shaver with a damaged or broken foil or cutter, as injury to skin may occur.
12. Please do not twist, disassemble or puncture the rechargeable battery within the shaver, otherwise it may cause a short circuit or burn the appliance. If the battery is not working do not run the shaver and take it to an authorized dealer.
13. Do not disassemble this shaver on your own. Visit authorized dealers for service and repair.
14. Choose the correct voltage socket before charging (AC100-240V, 50/60Hz).
15. If the cord on the power adapter is damaged, stop using it immediately and replace right away.
16. Only use the original power adapter manufactured by JRL. Using any other adapters from a different company may cause the shaver to malfunction while charging.
17. For the purposes of recharging the battery, only use the detachable supply unit provided with this appliance.

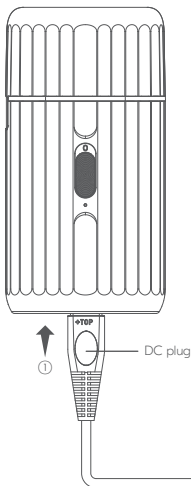
Product overview



Product specifications

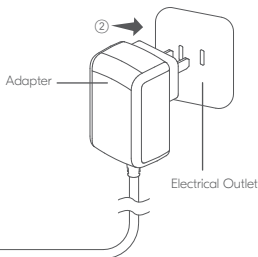
Product code: SH230I			
Item	Specifications	Item	Specifications
Power adapter	Input AC 100-240V 50/60Hz	Type of battery	Lithium ion battery
	Output DC 5V 1A	Charging time	2 hours
Battery capacity	3.7V 1400mAh	Usage time	3 hours

Charging Instructions



1. Turn the shaver off and connect the power cord to the shaver.
2. Plug in the power adapter to charge.

2 hours charging time for maximum 3 hours of use
(charging while in use will extend its charging time).



Basic Operating Instructions

1. Remove the protective cover.
2. Push the switch to turn the shaver on to start shaving.
3. Gently stretch the skin of your face with your free hand while moving the shaver slowly and smoothly against the grain of your beard. Do not push the shaver on the skin too hard as it could cause abrasions and irritation.

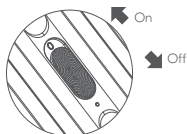
The battery indicator shows the current battery status.

Charging:

- When the shaver is in low power mode, the red JRL light will flash.
- When the shaver is in high power mode, the white JRL light will flash.
- When the shaver is fully charged, the white JRL light is on.

In use:

- When the shaver is in high power mode, the white JRL light will remain on.
- When the shaver battery is low, the red JRL light is on.
- When the shaver has less than 10 minutes of usable time, the JRL indicator light flashes in red.



Maintenance

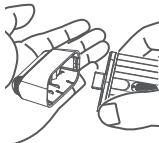
To Replace Shaver Blade:

As shown on the right, to remove the shaver blade, hold the shaver, press the shaving blade release button and gently pull up and away from drive shaft.

Note: Please hold the blade while holding the shaver to prevent the blade from falling and being damaged.

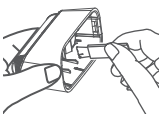
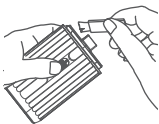
Align new blade above the drive shaft and lightly push down until it snaps into place.

Replace the blade assembly, turn shaver on to ensure it is working properly.



Blade cleaning and maintenance

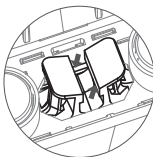
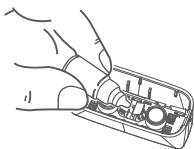
1. Use cleaning brush to whisk away any debris on and around blade.



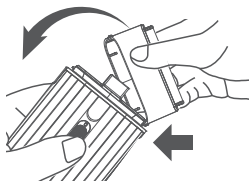
2. Rinse the blade of the shaver under running water. (NEVER submerge the shaver in water.)
3. Leave the shaver blade open for drying.



4. After the blade is cleaned, drip 1-2 drops of lubricant on the corresponding areas.



5. Snap the blade assembly closed.



Warranty

1. Under normal conditions of proper use and maintenance of the product, the warranty period of the product is 1 year.
2. Expendable parts, such as blades, guards, lubricants, cleaning brushes, etc., are not under the terms of the warranty.
3. The following conditions are not covered by the warranty service: Failure to show a valid warranty card, or the information on the warranty card is inconsistent with the actual product. Shavers with alterations will not be covered by the warranty service. Proof of purchase must be included with warranty card. Failure to follow the instructions in the instruction manual to operate and maintain the shaver, causing it to malfunction or damage it by dropping the shaver, immersing the shaver in water and physical alterations of any kind will void the warranty service. Product damage due to transportation or improper storage.
4. This warranty card is the only warranty certificate, please store it properly along with your proof of purchase.
5. The company will charge a maintenance fee for products without a warranty card or beyond the warranty period.
6. Please send the shaver in need of repair or warranty directly to the designated JRL domestic service center for repair, maintenance, or replacement.

Warranty card

Customer Contact Information:

Client Name: _____ Contact Phone: _____

Address: _____

Date Purchased: _____ Exp of Warranty Period: _____

Proof of Purchase: ☐ Enclosed ☐ Not Enclosed (Warranty Automatically Voided)

Machine Serial Number: _____

Reason of Return: _____



**Guang Zhou Eagle
Fortress Hair Products Ltd.**

No.4 Shuanglong Yucai
Street, Shiling Town, Huadu
District, Guangzhou, 510899,
China

Bratt Trading AB

Radiövägen 34
135 48 Tyresö SWEDEN
+46 (8) 712 95 10
info@bratt-trading.se
www.bratt-trading.com



www.jrl.com



www.bratt-trading.com

